

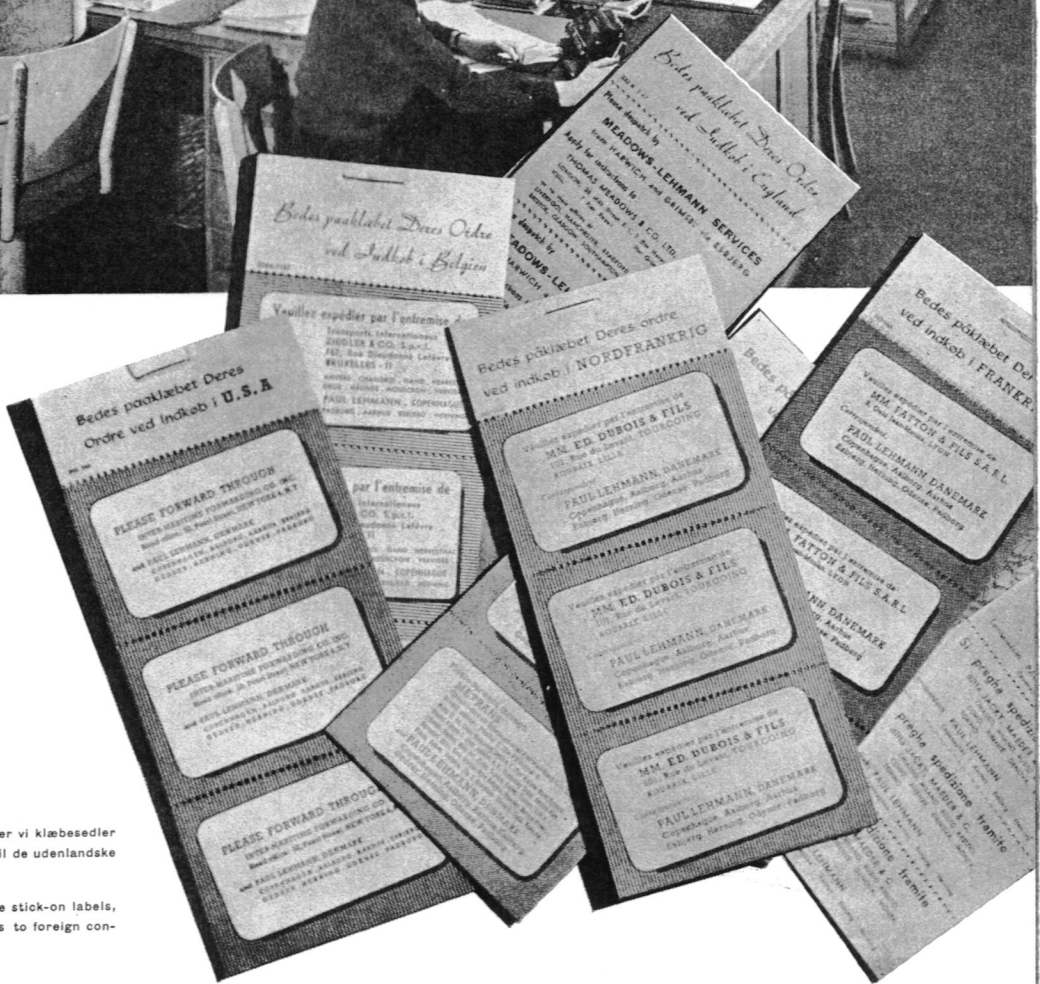
⤴ Importafdelingen i Amaliegade
The import department, Amaliegade

Importafdelingen modtog i 1949 ialt 2703 jernbanevognladninger med ca. 30.000 tons varer. Det svarer til den godsmængde, som transportereres med 90 fuldtlastede godstog. Samtidig indgik pr. lastauto 1297 tons gods. Bilerne havde ved disse transporter kørt ca. 162.000 km.

In 1949 our import department took delivery of 2703 railway trucks, carrying some 30.000 tons of goods equal to 90 fullyloaded goods trains. During the same period 1297 tons of goods were received by road transport covering 162.000 km.

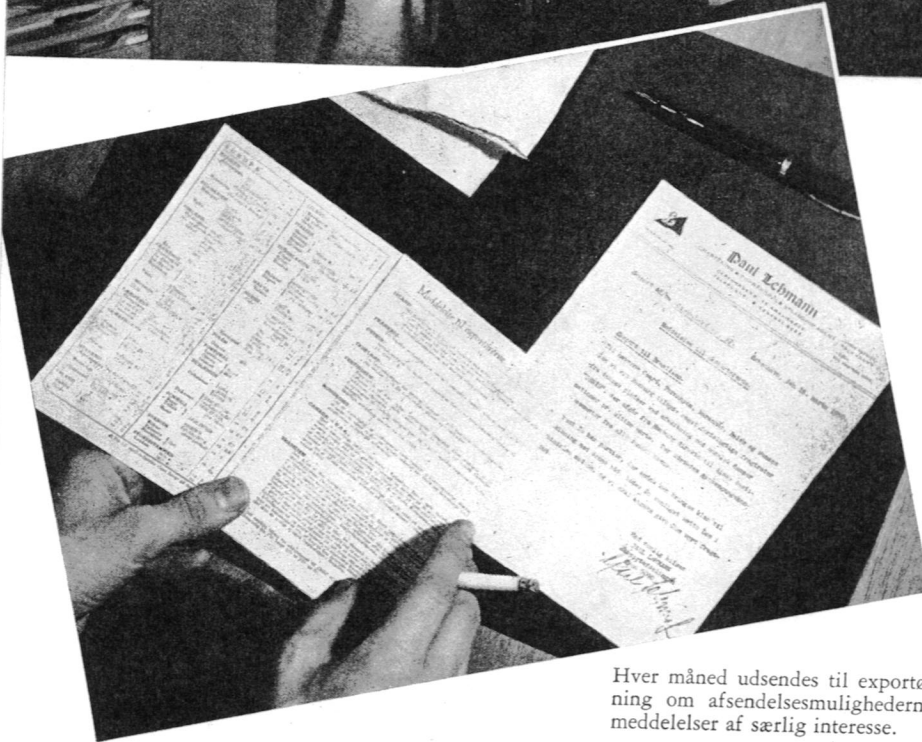
⤵ Til brug for importørerne fremstiller vi klæbesedler påtrykt forsendelsesinstruktioner til de udenlandske leverandører

For the use of importers we provide stick-on labels, printed with despatch instructions to foreign consignors





▲ Exportafdelingens kontor i Friha
The export department in the
Port offices



Exportafdelingen afsendte i 1949 ialt 3073 jernbanevognlaster med 31.000 tons gods. Der er til ca. 100 fuldtlastede godsvogne. Pr. auto blev afsendt ca. 4.000 tons, hvorved bilerne kørte ialt 504.000 kilometer.

In 1949 despatches totalled railway truck loads, counting 31.000 tons of goods, equivalent to about 100 fully-laden goods trains. About 4.000 tons were sent by road transport. (The trucks covered 504.000 km. altogether).

Hver måned udsendes til eksportørerne vor eksportliste, som giver oplysning om afsendelsesmulighederne til udlandet samt indeholder meddelelser af særlig interesse.

Every month we send our Export List to shippers with information on sailings and other items of interest.

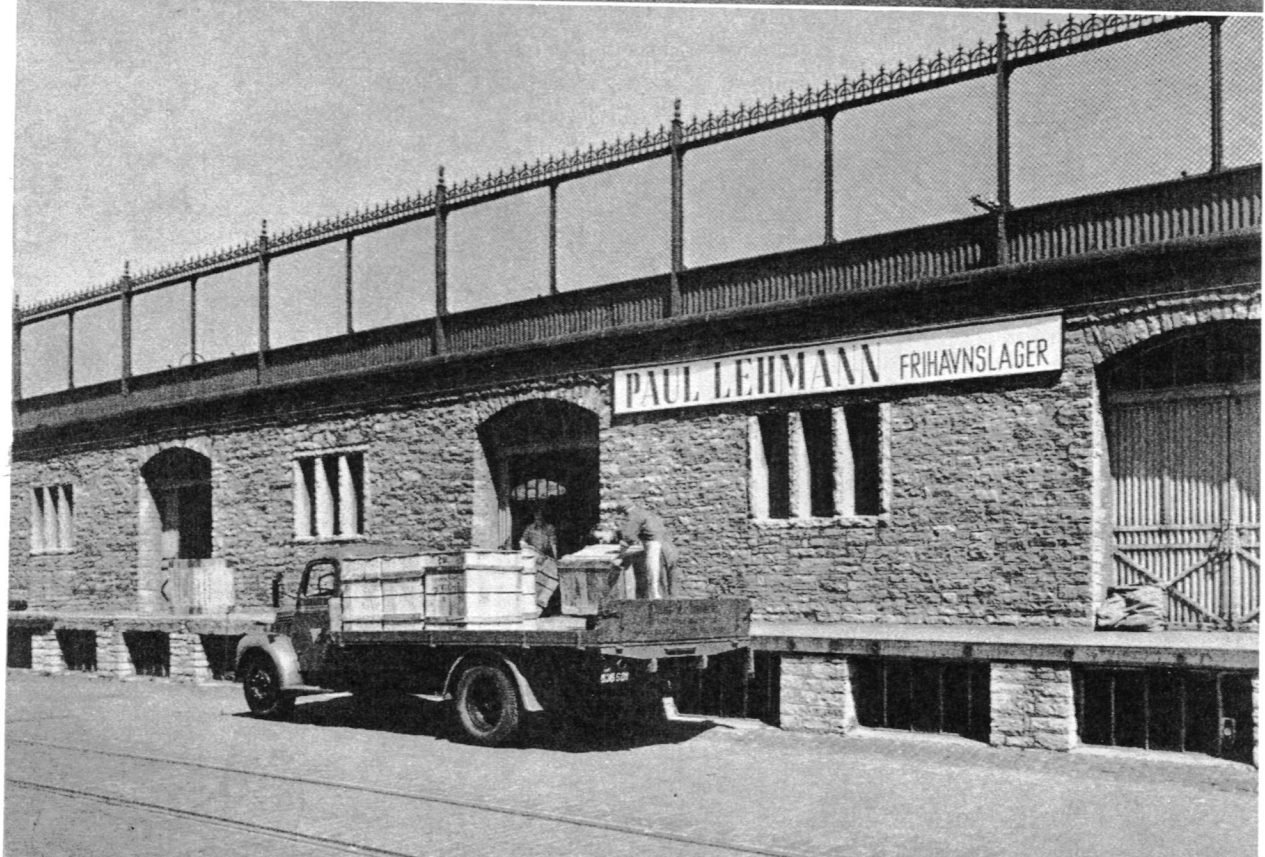
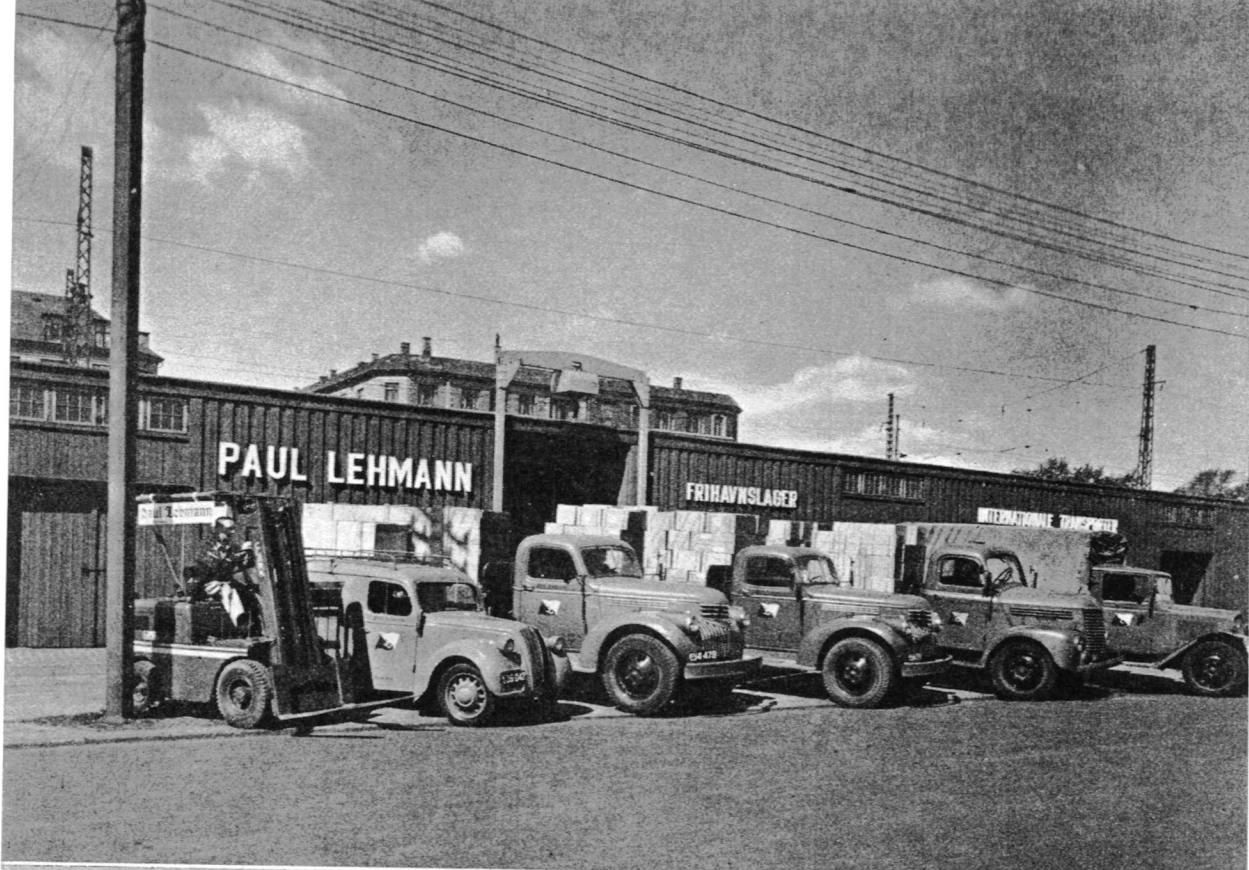


Tarifafdelingen
The tariff department

Tarifafdelingen råder over et betydeligt tarifmateriale, deriblandt et helt bibliotek på ca. 150 bind udenlandske jernbanetariffer. Her udregnes det grundlag, på hvilket organisationen afgiver tilbud på ind- og udgående fragtovertagelser, ligesom jernbanernes fragtberegninger revideres efter gennemført transport.

The tariff department has comprehensive information about rates and charges, including a library of 150 volumes of foreign railway rates. This information forms the basis on which our quotations are made and railway charges checked.





Klarering af varer på
Københavns toldbod
Clearing goods at
the Copenhagen
Custom-house



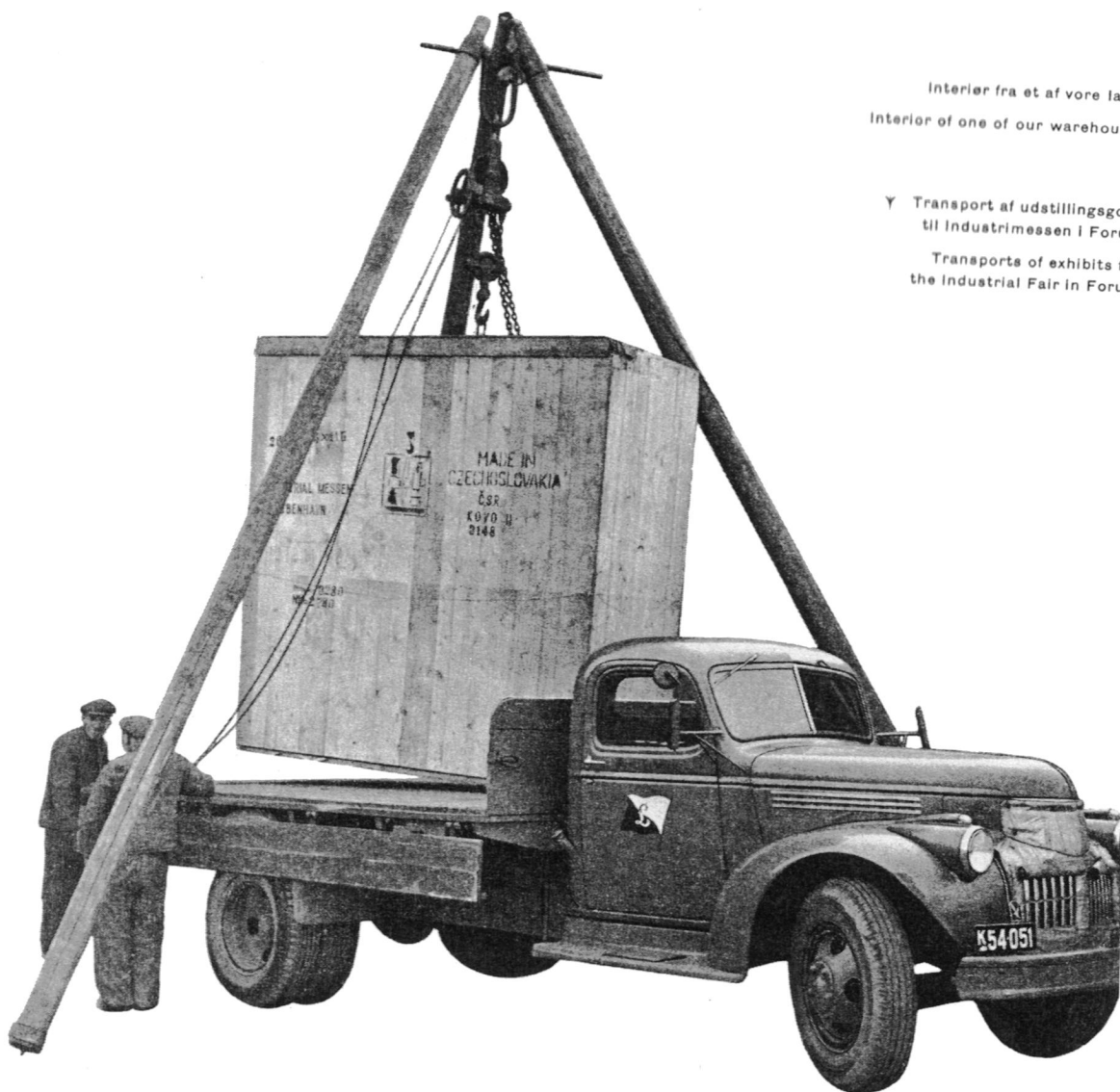
Et par af vore
lagre i
Københavns Frihavn
Two of our
warehouses in
the Free Port

Afdelingen for toldklarering er et vigtigt led i firmaets organisation. Her toldbehandles importvarerne, inden de får lov at komme ind i landet, og varer, som senere skal exporteres, indføres med reservation af tolden. Der er meget at iagttage, hvis alting skal være i orden. Specielt uddannede medarbejdere med indgående kendskab til de danske told- og valutaforskrifter afviklede i 1949 alene i København 12.124 ekspeditioner til et samlet toldbeløb af ca. 5 millioner kroner.

The department for Customs clearance is an important part of the organisation. Imported goods are cleared through the Customs before they can be delivered, provided they are not sent in bond to interior places. The Customs require to check export goods prior to shipment and great care in filling out documents is necessary. We have an expert staff with an intimate knowledge of the Danish customs and exchange regulations, who in Copenhagen alone in 1949 handled 12.124 consignments paying about 5 million kroner in duty.

Interior fra et af vore lagre
Interior of one of our warehouses

Y Transport af udstillingsgods
til Industrimessen i Forum
Transports of exhibits for
the Industrial Fair in Forum



Kørselsafdelingen i København disponerer over 5 lastautomobiler og gør endvidere daglig brug af lejede vogne. Vore egne bilers kilometertællere viste sidste år alene i lokalkørselen i København 102.800 km.

Lagerafdelingen råder i København over ialt 2125 m² lagerrum i og udenfor Frihavnen. En betydelig del af det oplagrede gods er konsignationsvarer, der udleveres resp. reexporteres for udenlandsk regning.

The cartage department in Copenhagen has five motor trucks and hires other trucks daily. Last year in Copenhagen alone these covered 102.800 km.

Our storage accommodation covers 2.125 square metres, some of which is in the Free Port. Many of the goods stored are sent on consignment for subsequent despatch.



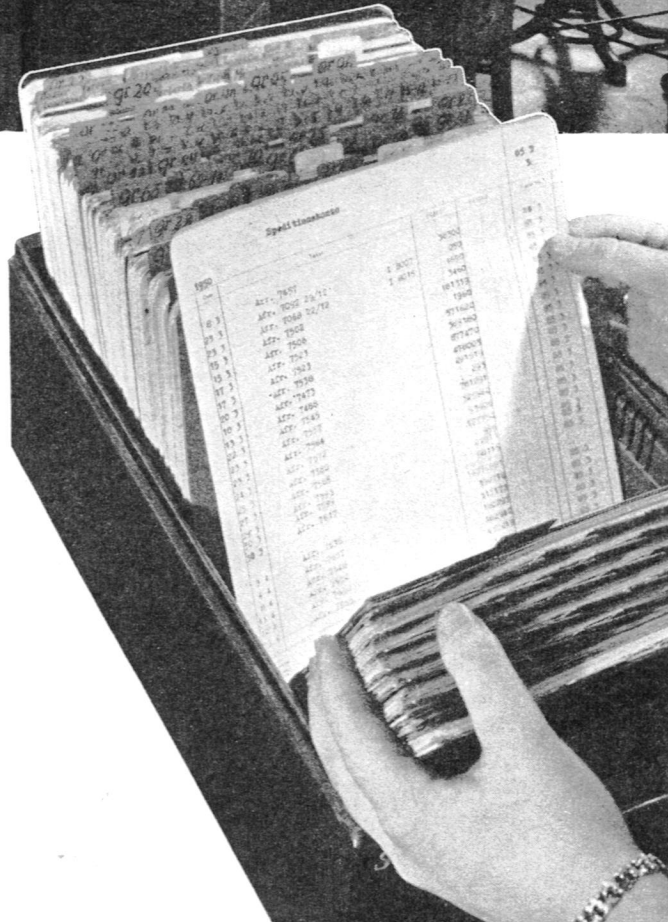


Bogholderiet

The book-keeping department

Bogholderiet, som i et speditjonsfirma altid er omfattende og kompliceret, er anlagt efter Ruf-systemet. Trods systematisk rationalisering foretoges i 1949 ca. 200.000 posteringer med en samlet omsætning på ca. 25,5 millioner kroner.

Book-keeping, which in a transport firm is always comprehensive and complicated, is arranged on the Ruf system. Even with entries reduced to a minimum, 200.000 entries were made in 1949, with a total turn-over of about 25,5 million kroner.





Organisationsmøde. A Staff Meeting

For at drøfte erfaringer og problemer fra det daglige arbejde afholdes i København månedlige organisationsmøder. I disse møder deltager direktionen og de ledende medarbejdere.

In order to exchange experiences and to discuss mutual problems monthly staff meetings are held at Copenhagen, in which the director, the managers and senior members of the staff take part.

Under ledelse af firmaets chefklarerer opretholdes en toldskole for lærlinge. Den nye generation får her specialundervisning i Toldloven, Toldtariffen og Vareforsyningsloven af firmaets ældre og erfarne medarbejdere, der stiller deres specialviden og deres erfaringer til rådighed for de yngre.

Under the leadership of our chief Customs clerk classes are held for junior members of the staff. They are instructed in Customs regulations and tariffs.



Undervisning i toldskolen. Training Junior Staff